



# Mount Pleasant

Paddock Wood TN12 6AH

£1,295 PCM



COUNTRY HOMES

Paddock Wood TN12 6AH

CLOSE TO SHOPS AND STATION.

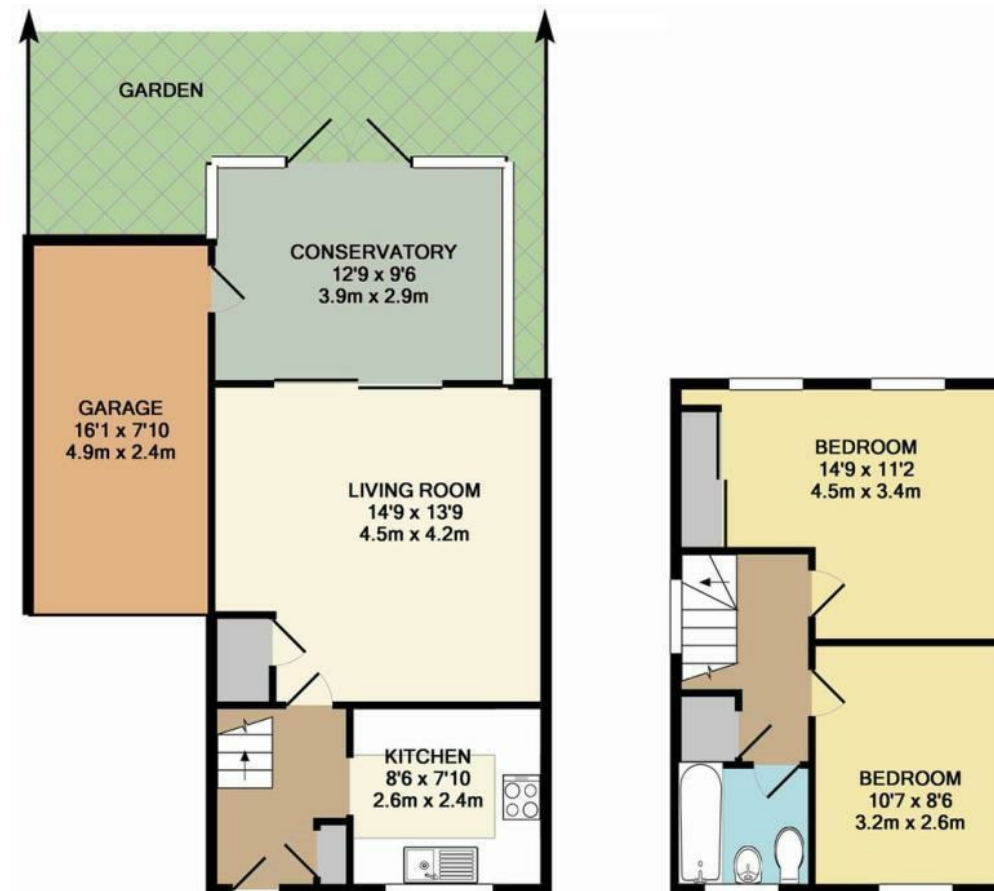
We are pleased to offer this well maintained end of terrace home internally comprising of a good size sitting room, conservatory, brand new fitted kitchen, two double bedrooms and a family bathroom. Externally the property boasts parking, garage and an enclosed low maintenance rear garden with side access.

The property is within walking distance of the main line station and Paddock Wood High Street. The location occupies a favourable position forming part of a small terrace. This is the perfect property for commuters and local tenants.

AVAILABLE FROM 7th November

- Close to station and shops
- End Of Terrace
- Two Double Bedrooms
- Large Lounge
- Bathroom
- Garden
- Garage
- Off Road Parking
- Available 7th November





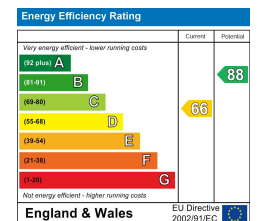
GROUND FLOOR  
APPROX. FLOOR  
AREA 559 SQ.FT.  
(52.0 SQ.M.)

1ST FLOOR  
APPROX. FLOOR  
AREA 312 SQ.FT.  
(29.0 SQ.M.)

TOTAL APPROX. FLOOR AREA 871 SQ.FT. (80.9 SQ.M.)

Whilst every attempt has been made to ensure the accuracy of the floor plan contained here, measurements of doors, windows, rooms and any other items are approximate and no responsibility is taken for any error, omission, or mis-statement. This plan is for illustrative purposes only and should be used as such by any prospective purchaser. The services, systems and appliances shown have not been tested and no guarantee as to their operability or efficiency can be given.

Made with Metropix ©2014



8 Liberty Square, Kings Hill, Kent, ME19 4AU  
01732 522 822  
countryhomes@khp.me

**KHP**  
www.khp.me  
**COUNTRY HOMES**





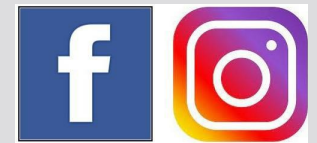
## Location Map

Tenure:

Council tax band:

### DISCLAIMER

All dimensions are approximate and any floor plans are for guidance purposes only. Reference to appliances and/or services does not imply that they are necessarily in working order. Whilst we endeavor to make our rental particulars as accurate as possible, all interested parties must verify their accuracy themselves.



**Boomin**

**Zoopla.co.uk**  
Smarter property search



**TO VIEW CONTACT:**

**01732 522 822**

**countryhomes@khp.me**

**www.khp.me**

**rightmove**